

8. UTILITIES

The ability to accommodate development, and the density and intensity of same, depends in part on whether centralized wastewater treatment and water supply systems are available, or can be extended into an area. Large portions of the Town of Poughkeepsie are served by centralized facilities. It is important that the availability of these facilities does not become the primary “driver” of land use decision making. First, the Town’s citizenry must decide how it wants to grow, and the type of community that it wants to aspire to, as set forth in its vision of the community, and then make decisions related to the availability of utilities that are consistent with that vision.

8.1 Wastewater Treatment

While much of the Town is sewered, there are extensive areas of the Town, especially easterly and northeasterly neighborhoods, that are served by septic systems. **Map 20 and Map 21** illustrate the sewer districts serving the various areas of the Town.

The Arlington WWTP serves only the Town. The Arlington WWTP has a monthly average effluent limit of 4 million gallons per day according to its SPDES permit in 2012 but the facility was expanded to 5 million gallons per day - its outfall is into the Hudson River. It serves the majority of the sewered areas of the Town. Various improvements are being made to the system. With Hudson Heritage improvements, it is anticipated that the flow will be reduced as the roof drains for the facility have been tied into the sewer main. Approximately 500,000 gallons of infiltration/inflow have been taken out of the Arlington and Hagen Farms portions of the district.

The Trimunicipal Wastewater Treatment plant is located off of Sheafe Road south of the Tilcon quarry. It serves the Town of Wappinger, Village of Wappinger Falls, and a portion of the Town of Poughkeepsie. The plant was recently awarded a \$105,000 grant to eliminate a redundant sewer district and increase capacity of the Tri-Municipal Wastewater treatment facility to accommodate increased flow, which will allow for expansion and economic development for each participating community, while allowing the Hudson Valley Regional Airport the ability to tie in, promoting countywide economic development. It is allowed a monthly average flow of 2.775 million gallons per day according to its SPDES permit. Within the Town, this facility serves the southerly portion of the Town along the Route 9 corridor.

The City of Poughkeepsie Wastewater Treatment Plant is located within the unincorporated Town, just south of the McCann Arena. Flow data were unavailable in the SPDES permit that was reviewed. According to data provided by the Town, total flow through the City of Poughkeepsie plant in October 2019 was 193 million gallons per day, and 6.2 million gallons per day on average. The total Town of Poughkeepsie flows was 36 million gallons, or approximately 1.17 million gallons per day. The Town of Poughkeepsie flow is approximately 18.8 percent of the total plant flow. The City of Poughkeepsie plant serves the Fairview neighborhood. The City plant’s capacity is estimated to be approximately 31 percent of capacity. The Town owns approximately 41 percent of the plant.

8.2 Water Supply

Map 22 illustrates areas of the Town which receive water from the Town's system – almost the entirety of the Town is served by municipal water, including parcels which are presently on septic systems. The Town maintains one water district. Water is drawn from a water treatment facility located along the Hudson River. The Town and City of Poughkeepsie co-own the plant. The facility treats water and water is provided to other Towns in the County, including the Town of Hyde Park and the Town of East Fishkill. Plans are in process to connect Pleasant Valley to the water supply system. The Town of LaGrange has discussed connecting to the Town system for emergency purposes. The Town of Poughkeepsie utilizes approximately 4.5 million gallons per day, and the plant can put out approximately up to 19 million gallons per day, of which the Town is permitted up to 10 million gallons per day by agreement. Rarely does the facility experience any salt water intrusion and the facility can pump around the tide. There is no infiltration into the system has the system due to the system's pressure. The majority of the system was constructed in 1971. The Town maintains 2, 5-million gallon storage tanks at 198 Cedar Avenue by Spackenkill Road, and another at the end of Barns Drive. There are few low pressure areas – where that may exist, there are pressure tanks in the homes. The system also operates booster stations for higher elevations of the Town, such as Woodland Avenue, Spy Hill, Spring Street, and other areas. At this time, the Town has a need for additional storage to provide 1.5 days of water storage. The tanks physically cannot accommodate the additional capacity, and the replacement of a 5 million gallon tank to a 10 million gallon tank is being explored. Several existing wells have been offline for 10 years and will be going back online for emergency purposes – an additional 1.7 million gallons per day will be available by summer. Three wells are present by Frank Brothers farm on Overlook Road and Wappinger Creek. It is reported there is no hydrological connection to the creek, thus no drawdown is expected.

A Town water line serves the airport; at Overocker Road, the line becomes county-owned and ravel down the rail trail. Requests for water use goes to the joint water board for approval of additional users. The County is to provide storage on their portion of the line.

8.3 Resource Recovery

Within the Town, a Resource Recovery Facility (“RRF”) is located on the west side of Sand Dock Road. According to the agency's website¹, the Dutchess County Resource Recovery Agency (“RRA”) is a public benefit agency that was established by the New York State Legislature in 1982 to oversee the construction, financing and operation of the Resource Recovery Facility, which opened in 1989. The RRF is a waste-to-energy facility that combusts most of the garbage that is collected in Dutchess County and is operated by Wheelabrator Dutchess County LLC. The RRF has a capacity of processing 164,000 tons of post-recycled waste per year and has a turbine that converts energy from the waste, which is then sold to Central Hudson Gas & Electric. The facility can turn 450 tons of waste into 9.3 megawatts (MW) of renewable power every day, enough to

¹ <http://www.dccra.org/>

power over 9,000 homes. The facility also recovers 10 to 14 million pounds of ferrous metals from the waste for recycling each year.

8.4 Electric and Gas

Central Hudson Electric and Gas serves the Town, and the utility's headquarters are located in the Town – it is a subsidiary of Fortis, Inc. In terms of land use, a Central Hudson Gas and Electric substation facility is located on 25.38 acres of land adjoining Manchester Road. It also owns a large electric transmission line parcel which runs west and east, south of and paralleling the Town of Poughkeepsie boundary with the Town of Hyde Park.

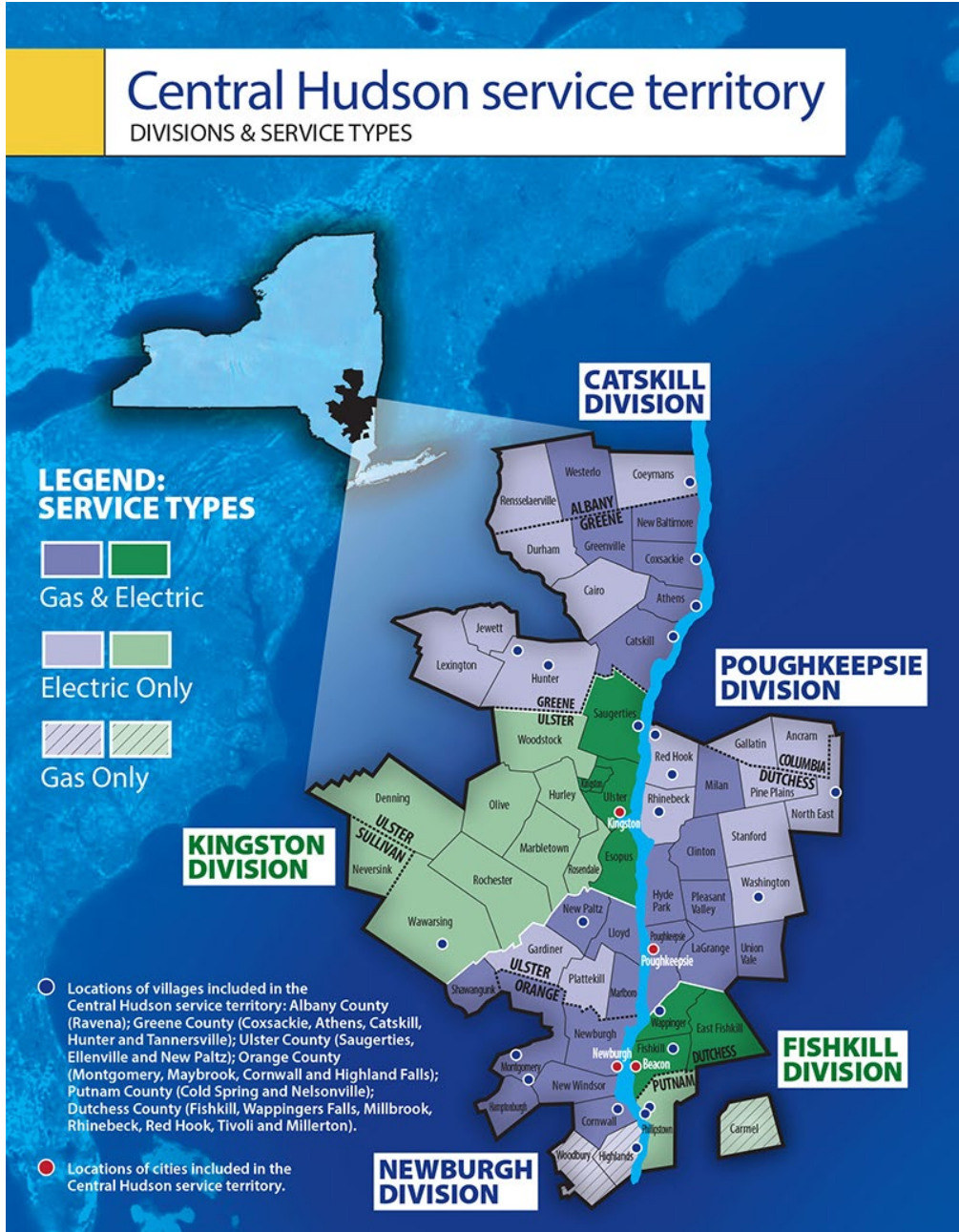


Figure 1. Gas and Electric Service.

