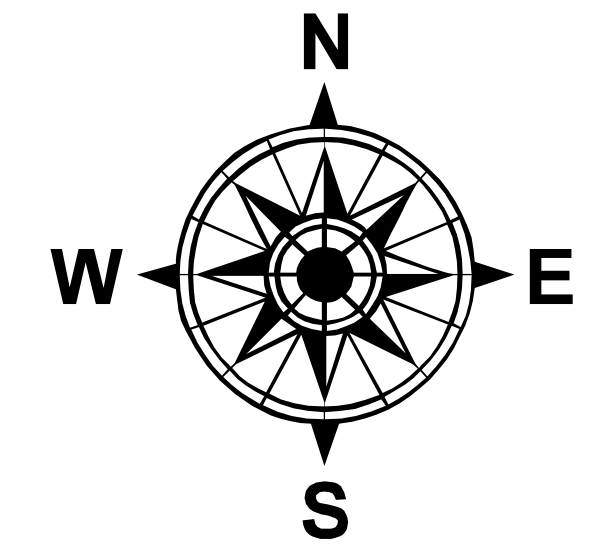
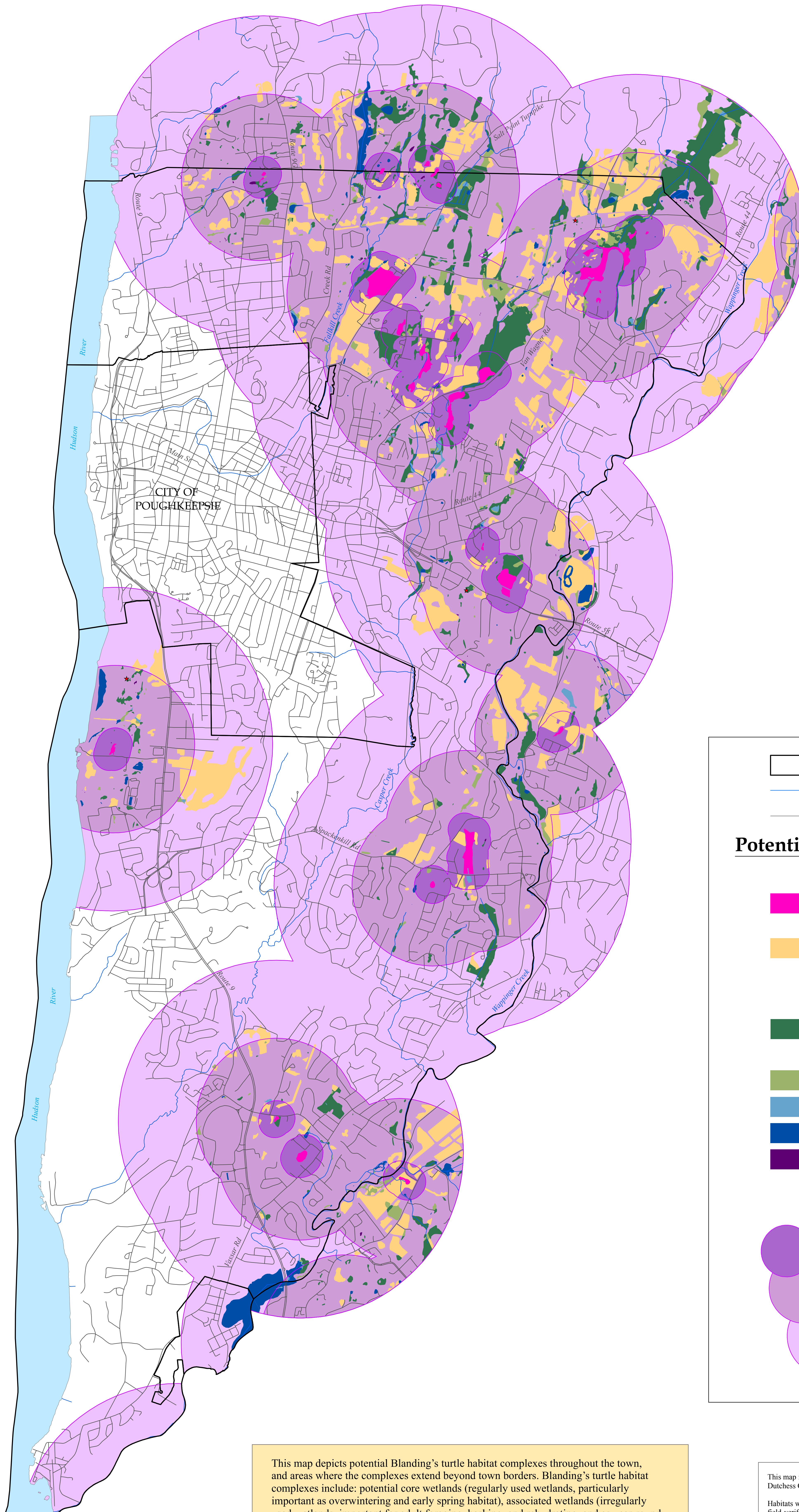
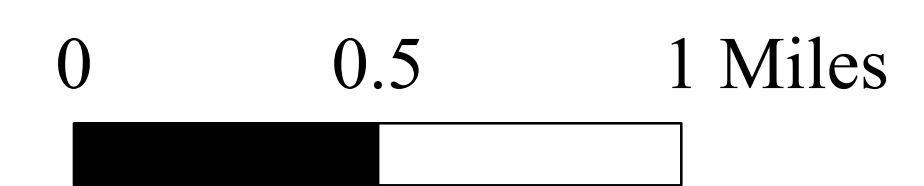


Potential Blanding's Turtle Habitats in the Town and City of Poughkeepsie, Dutchess County, NY



SCALE 1:20,000



Hudsonia Ltd.
PO Box 5000
Annandale, NY 12504
www.hudsonia.org

- Municipal boundary
- Stream
- Road

Potential Blanding's turtle habitats

Core habitat

Nesting habitat

Associated wetlands

Forested or shrub swamp

Buttonbush pool

Wet meadow

Marsh

Open water or constructed pond

Intermittent woodland pool

Conservation zones

Priority Zone (within 200 meters of core habitat)

Conservation Zone (within 1,000 meters of core habitat)

Area of Concern (within 2,000 meters of core habitat)

This map depicts potential Blanding's turtle habitat complexes throughout the town, and areas where the complexes extend beyond town borders. Blanding's turtle habitat complexes include: potential core wetlands (regularly used wetlands, particularly important as overwintering and early spring habitat), associated wetlands (irregularly used wetlands, important for adult foraging, basking, and rehydrating, and as year-round habitat for young turtles), potential nesting habitats (sparsely vegetated or open areas such as lawns and meadows), and the forested and meadow areas between these habitats (used for summer aestivation and for travel).

We have delineated three zones important for Blanding's turtle conservation: the **Priority Zone** (upland areas within 200 meters of core wetlands frequently used by turtles for basking and other purposes), the **Conservation Zone** (upland and wetland habitats within 1,000 meters of core wetlands used regularly by Blanding's turtles from April through October), and the **Area of Concern** (upland and wetland habitats within 2,000 meters of core wetlands that are used irregularly by Blanding's turtles to nest, or to explore new habitats). See the accompanying report (Hartwig et al. 2009) for detailed information.

An important caution:

This map is suitable for general land-use planning, but is not suitable for detailed planning and site design, or for jurisdictional determinations (e.g., for wetlands). Boundaries of wetlands and other habitats depicted here are only approximate.

This map is part of a larger project to identify known and potential Blanding's turtle habitats throughout six towns in southern Dutchess County: Beekman, Fishkill, LaGrange, Poughkeepsie, Union Vale, and Wappinger.

Habitats were identified through map analysis and aerial photograph interpretation, and as many core habitats as practicable were field-verified. Mapping and field work were completed primarily by Tanessa Hartwig and John Sullivan, with assistance from Kristen Bell and Gretchen Stevens. Kristen Bell created the map layout. Color infrared photographs in the USGS NAPP series, taken in spring 1994 or 1995 (scale 1:40,000), were used for stereoscopic photointerpretation. Habitats were digitized onscreen over color infrared orthophoto images taken in spring 2000 and 2004, obtained from the New York State GIS Clearinghouse. The report prepared in conjunction with these maps (Hartwig et al. 2009) explains the habitat identification and mapping methods, describes the ecological significance of each habitat type and the conservation zones, and offers conservation and management recommendations.

Road, stream, and town boundary data were obtained from the New York State GIS Clearinghouse website. The map was created using ArcView 9.2 GIS software on a Dell Vostro 1500 computer, and printed on a Hewlett Packard DesignJet 800PS plotter.

Funds for this project were provided to Hudsonia by the Marilyn Milton Simpson Charitable Trusts and the New York State Environmental Protection Fund through the Hudson River Estuary Program of the New York State Department of Environmental Conservation.

For more information contact Tanessa Hartwig or Gretchen Stevens, Hudsonia Ltd., 845-758-0600; or reference the accompanying report: Hartwig, T., G. Stevens, J. Sullivan, and E. Kiviat. 2009. Blanding's turtle habitats in southern Dutchess County. Report to the Marilyn Milton Simpson Charitable Trusts and NYS DEC Hudson River Estuary Program. Hudsonia Ltd., Annandale, NY.