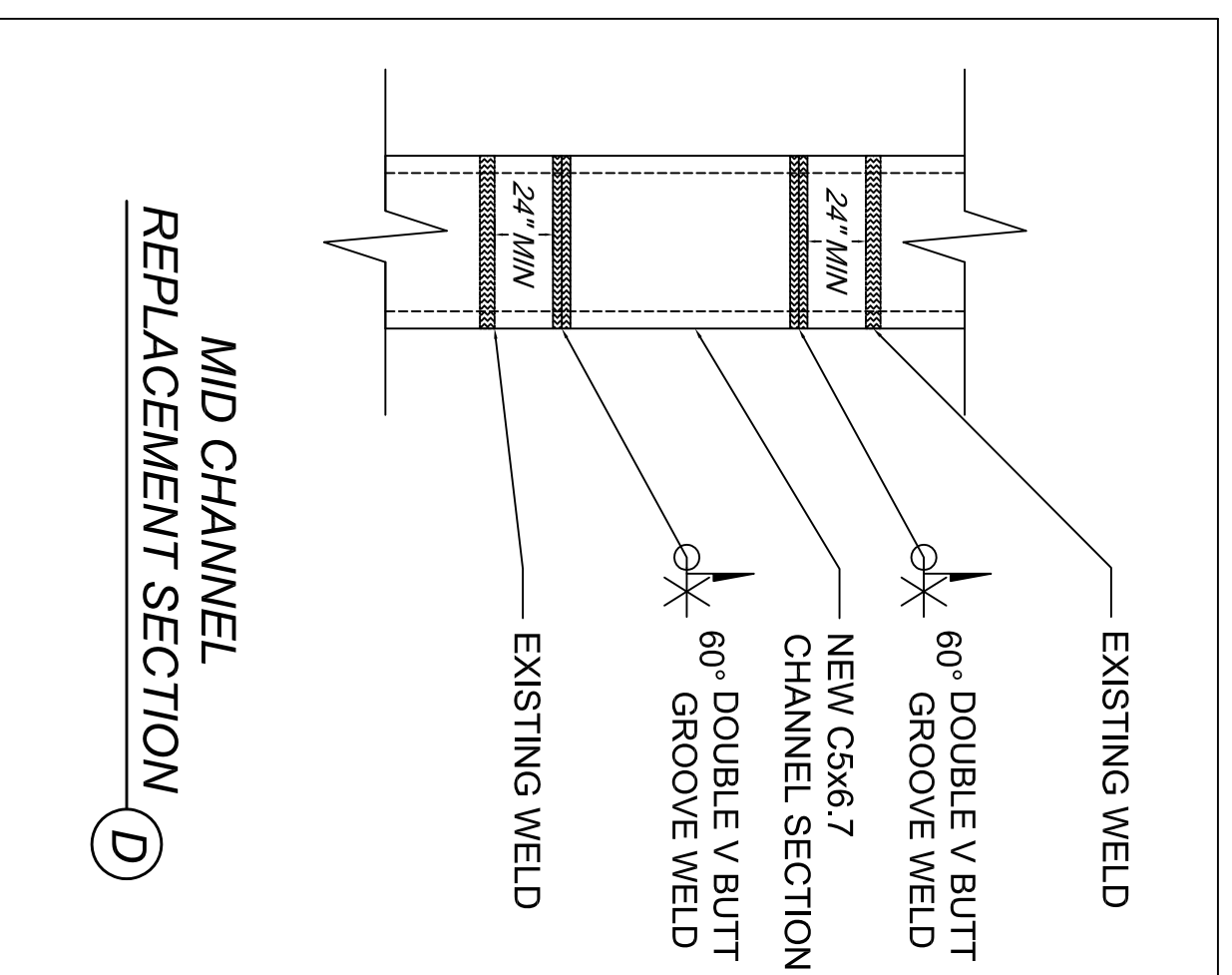


**BASE PLATE CHANNEL SPLICE DETAIL (A)**

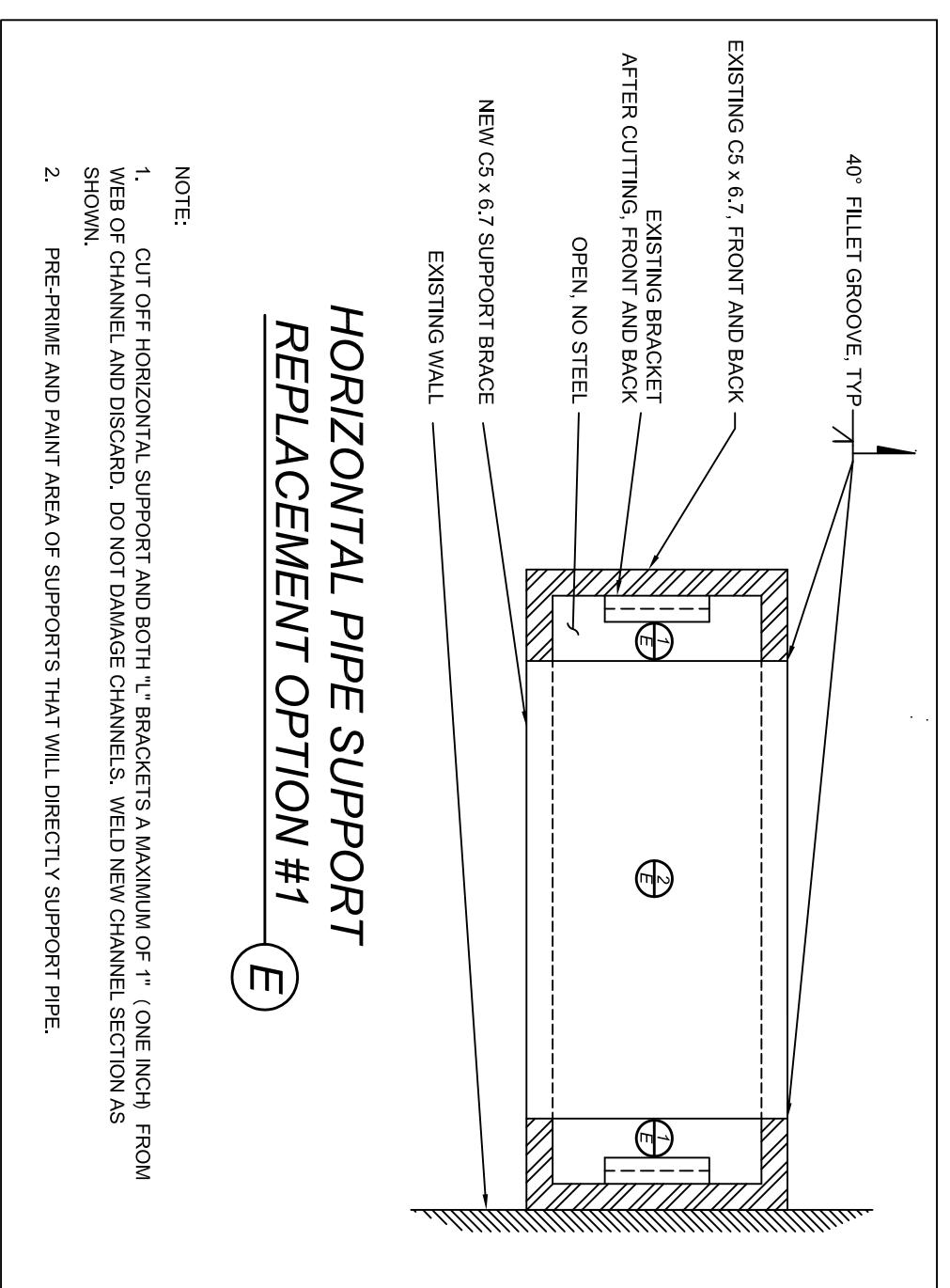
NOTE 1:  
THERE SHALL BE MAXIMUM 1 SPLICE PER ANY 36" LENGTH OF STEEL CHANNEL. IF A PROPOSED WELD IS 18" OR LESS FROM AN EXISTING SPLICE WELD OR ANOTHER PROPOSED SPLICE WELD, MAKE A NEW CUT MINIMUM 2" FARTHER AWAY FROM THE EXISTING WELD OR PROPOSED WELD AND USE A LONGER PIECE OF CHANNEL.

NOTE 2:  
IF A PORTION OF THE REAR CHANNEL, ATTACHED TO THE WALL, IS CUT OUT, DO NOT SPLICE WELD OLD AND NEW STEEL. CONSTRUCT NEW ANCHOR BOLTS FOR THE REMAINING CHANNEL AND THE REPLACEMENT SECTION. THE NEW SECTION SHALL BE ATTACHED WITH MINIMUM TWO 5/8"  $\phi$  ANCHOR BOLTS. THE OLD SECTION SHALL BE REINFORCED WITH MINIMUM ONE 5/8"  $\phi$  ANCHOR BOLT. MAINTAIN ANCHOR BOLT SPACING PER DETAILS G OR H.

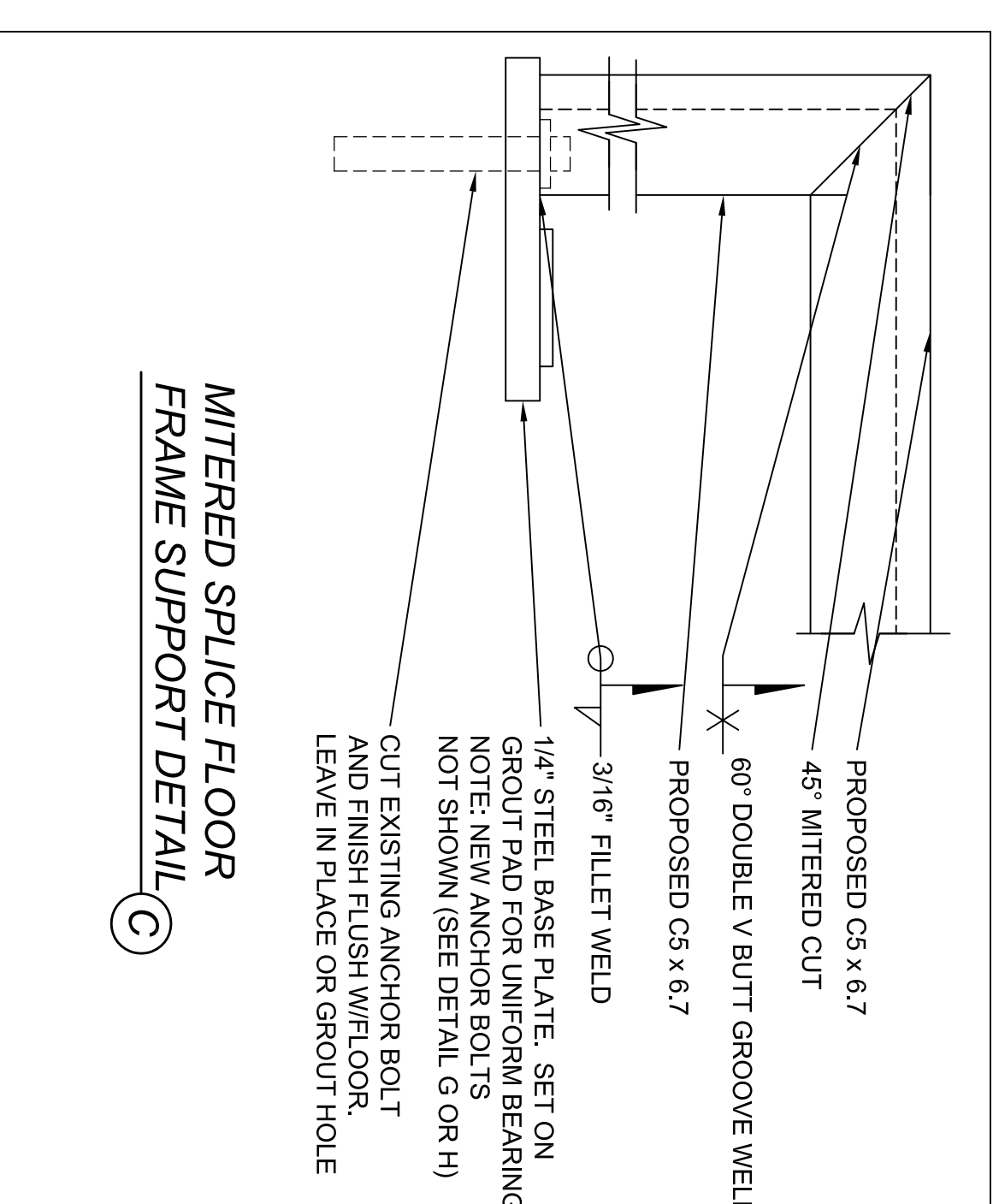
DETAIL (N/A) (B)



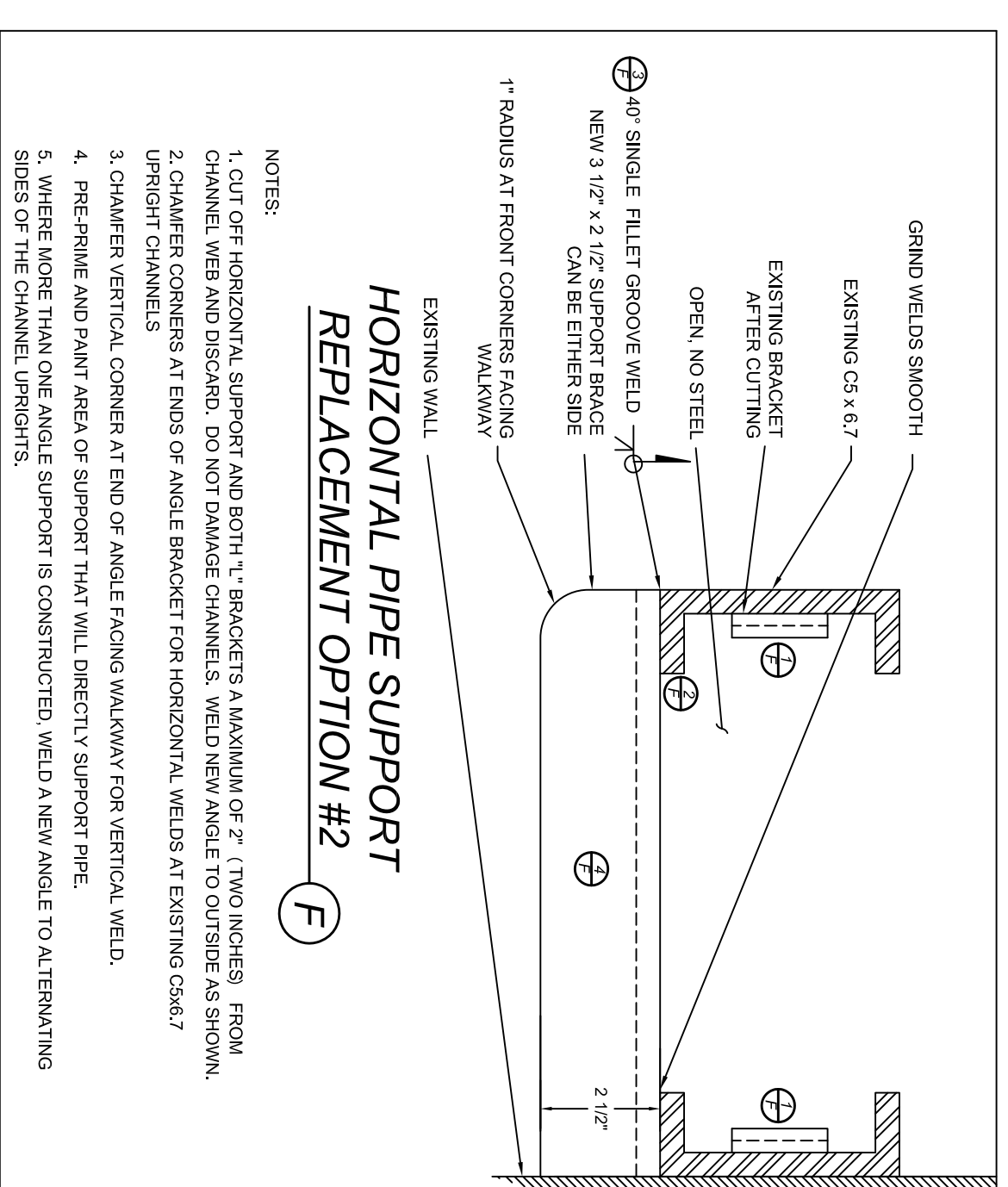
**MID CHANNEL REPLACEMENT SECTION (D)**



**HORIZONTAL PIPE SUPPORT REPLACEMENT OPTION #1 (E)**



**MITERED SPLICE FLOOR FRAME SUPPORT DETAIL (C)**



**HORIZONTAL PIPE SUPPORT REPLACEMENT OPTION #2 (F)**

NOTES:  
1. CUT OFF HORIZONTAL SUPPORT AND BOTH "L" BRACKETS A MAXIMUM OF 2" (TWO INCHES) FROM CHANNEL WEB AND DISCARD. DO NOT DAMAGE CHANNELS. WELD NEW ANGLE TO OUTSIDE AS SHOWN.  
2. CHAMFER CORNERS AT ENDS OF ANGLE BRACKET FOR HORIZONTAL WELDS AT EXISTING C5x6.7 UPRIGHT CHANNELS  
3. CHAMFER VERTICAL CORNER AT END OF ANGLE FACING WALKWAY FOR VERTICAL WELD.  
4. PRE-PRIME AND PAINT AREA OF SUPPORT THAT WILL DIRECTLY SUPPORT PIPE.  
5. WHERE MORE THAN ONE ANGLE SUPPORT IS CONSTRUCTED, WELD A NEW ANGLE TO ALTERNATING SIDES OF THE CHANNEL UPRIGHTS.

TOWN OF POUGHKEEPSIE ENGINEERING DEPARTMENT		REV./ No.	DATE	BY
DATE 11-28-2017	SCALE NTS	DESIGNED BY: <i>PHL</i>	FILE NO. 2017-7	DESCRIPTION <b>ARLINGTON WWTP PIPE SUPPORT CONTRACT 2017-7</b>
DRAWN BY: <i>SFC</i>				TOWN OF POUGHKEEPSIE DUTCHESS COUNTY, NY
				<b>STRUCTURE STEEL DETAILS</b>
				DWG 5 of 6